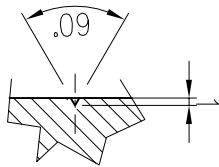
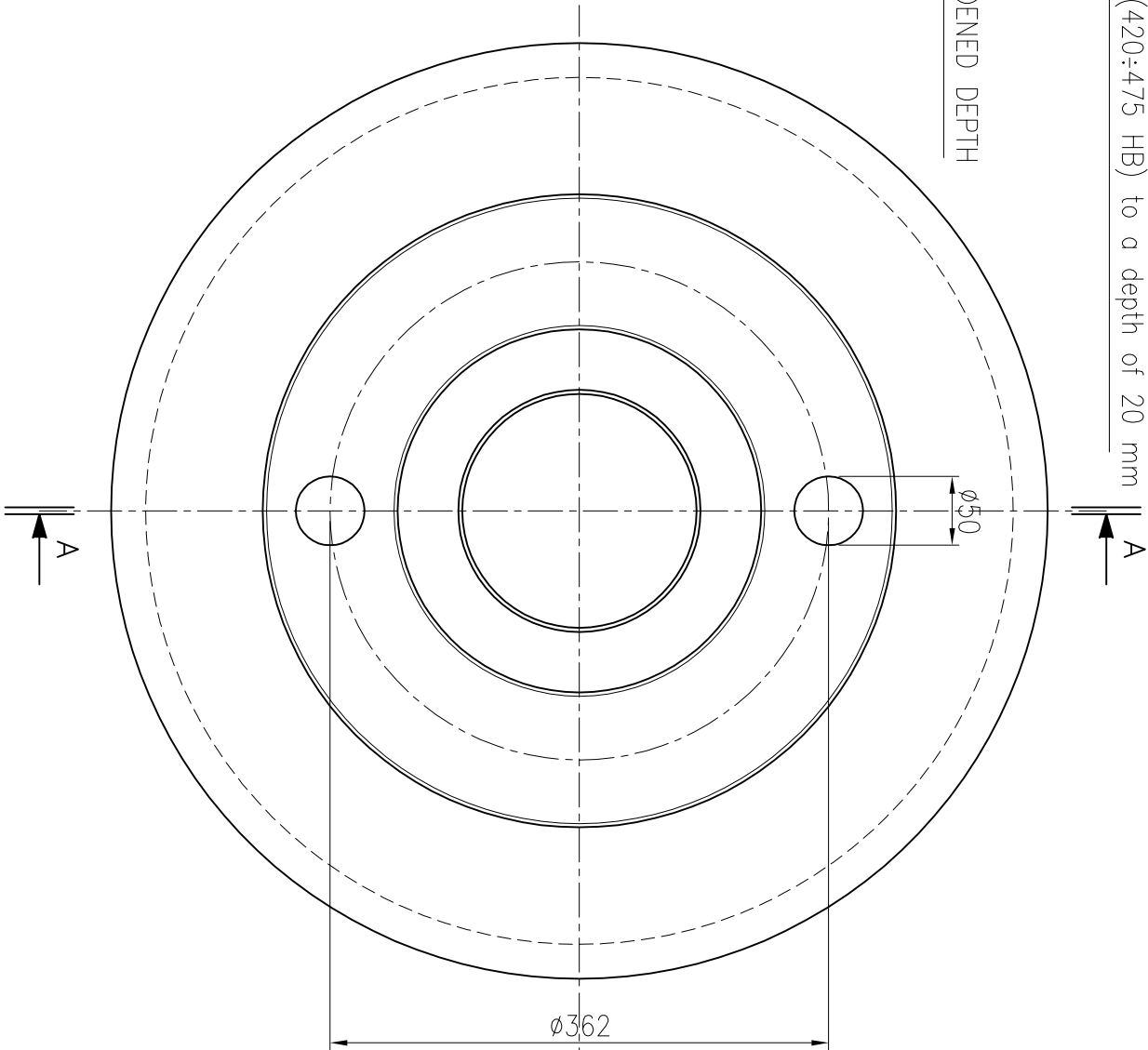
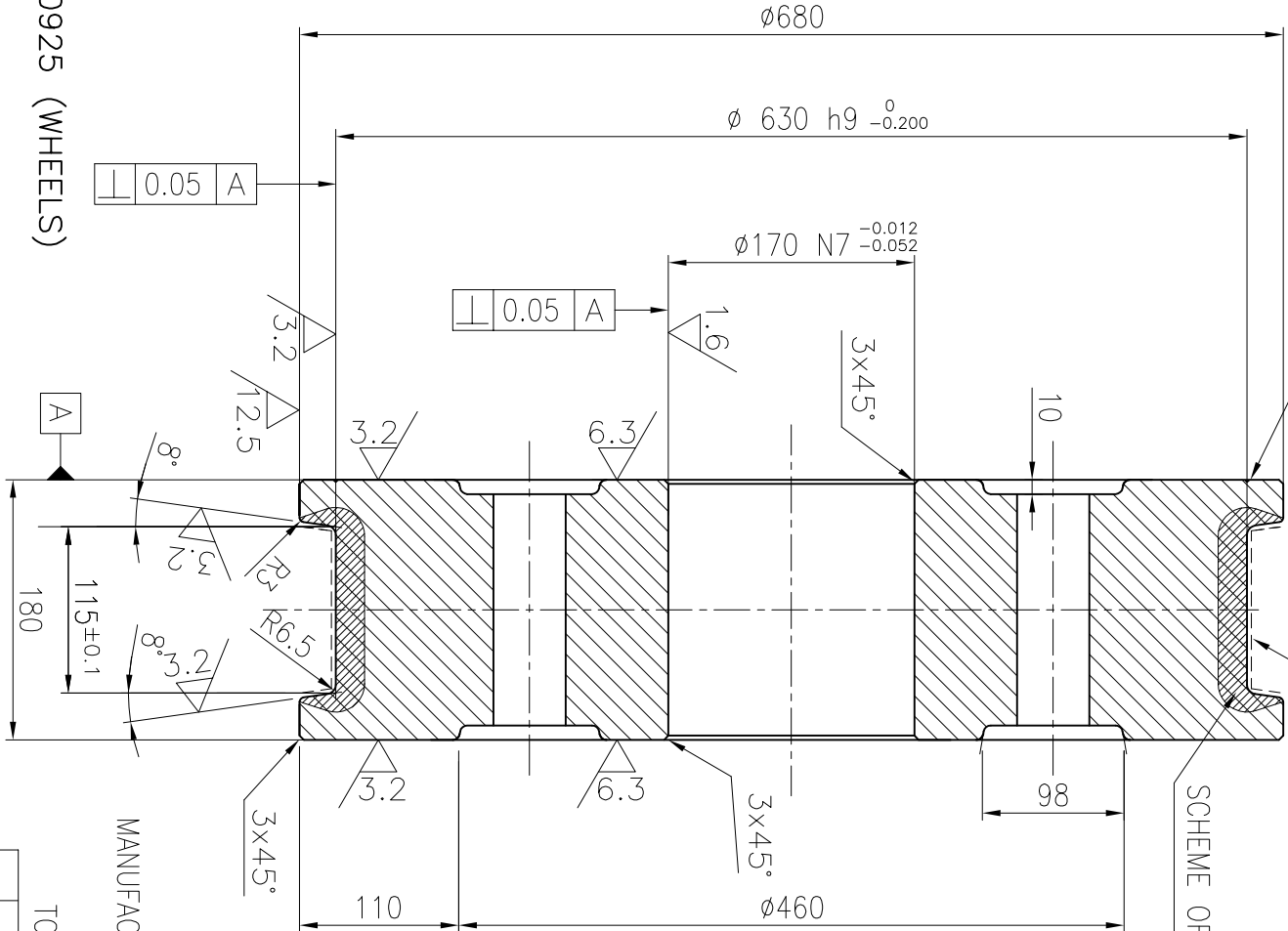


MOUNT THE WHEELS WITH THE  
CIRCULAR ENGRAVING  
ON THE OUTSIDE

HARDNESS:  
- on surface 440÷500 HV (420÷475 HB) to a depth of 20 mm



DETAIL TRACE



- MONOLITHIC WHEEL IN FORGED OR MOLTENSTEEL FOR A100 DIN 536 RAIL MATERIAL: STEEL 42CrMo4 TF EN 10083 OR MOLTEN STEEL WITH EQUIVALENT PERFORMANCES, ACCORDING TO EUROPEAN STANDARDS.
- WHEEL BODY NORMALISED AND TEMPERED
- HOT ASSEMBLY ON THE SHAFT
- $\varnothing 170\text{ N7/s6}$
- CERTIFICATES:
- CONTROLS AND CERTIFICATES AS IN RA 420925 (WHEELS)
- 1) ORIGINAL MATERIALS.
- 2) MECHANICAL AND CHEMICAL TEST CERTIFICATES (FOR CASTING)
- 3) ULTRASONIC TEST 10% ON WHEEL BODY (SPOT QUANTITY)
- 4) THERMAL TREATMENT CERTIFICATES.
- 5) PT 10% ON EACH LOT AFTER TT ON HARDENED SURFACE
- 6) DIMENSIONAL TESTING AND INSPECTION CERTIFICATES.
- 7) SUPERFICIAL HARDNESS AND MT/PT.
- 8) CONVOCATION OF OMG QC FOR VERIFICATION OF HARDNESS OBTAINED ON THE FIRST WHEELS OF EACH LOT
- 9) MEASURE OF HARDNESS GRADIENT (OR DOCUMENTS) ON YOUR SAMPLE OF EQUAL MATERIAL AND TT DERIVED FROM EXPERIENCE
- 10) ALL THE DOCUMENTS IN ENGLISH LANGUAGE

SECTION A-A

MANUFACTURE: GANTRY N.32 PIECES +  
TROLLEY N. 4 PIECES =

TOT. N. 36 PIECES x8 CRANES = N. 288 PIECES

25 / ( 6.3 / 3.2 / 1.6 )

|   |              |  |                                  |  |                       |                   |                |    |                |      |
|---|--------------|--|----------------------------------|--|-----------------------|-------------------|----------------|----|----------------|------|
|   |              |  |                                  |  |                       |                   |                |    |                |      |
| 03  | 16/01/09     |  | DELETED CURVATURE OF THE SURFACE |  |                       |                   |                | CL | RM             |      |
| 02  | 18//11/08    |  | REVISION AFTER SUPPLIER SUGGESTS |  |                       |                   |                |    | C.L.           |      |
| 01  | 04/11/08     |  | GENERAL REVISION                 |  |                       |                   |                |    | C.L.           |      |
|   | DATA<br>DATE | MODIFICA ESEGUITA O MOTIVO DELLA SOSTITUZ.<br>MODIFICATION EXECUTED OR REASON OF THE REPLACEMENT |                                  |  |                       |                   |                |    | DIS.<br>DRAWER | APP. |
| Fabb. di riferimento N.<br>Ref. material list |              | Materiale<br>Material  | Treatment<br>Trattamento         | Toll. gen. lov.<br>Mach tolerance<br>H11-d11 | Mod. o stampo<br>Type | Peso<br>Weight Kg | Scala<br>Scale |    |                |      |
|   |              | SEE NOTES  |                                  |  |                       |                   | 1:5            |    |                |      |

MG M

OFFICINE MECCANICHE GALILEO S.r.l.

via Brigata Tridelfino, 2-35020 PERNUMA (PD) ITALIA  
Tel. +39 0429 778388 - Telefax +39 0429 778290  
mail: info@mbong.com - Web: www.ombg-italy.com

OMG

A termine delle vigenti leggi questo disegno non può essere copiato, riprodotto, comuni-  
cato o terzi senza nostro autorizzazione scritta.

S.B.

DATA DATE

18/09/08

|  |  |             |  |            |    |
|--|--|-------------|--|------------|----|
| Dis. di riferimento N.<br>Ref. Drawing |  | Pos.        |  | 01         |    |
| GANTRY WHEEL $\varnothing 630$         |  | Comm. / Job |  | 1/1        | 02 |
| AND TROLLEY WHEEL                      |  | N.          |  | 12834-0121 | 03 |